

Brighton Creek Flood Study

Volume 2 of 2

Flood Study Report Disclaimer

The Brisbane City Council (“Council”) has prepared this report as a general reference source only and has taken all reasonable measures to ensure that the material contained in this report is as accurate as possible at the time of publication. However, the Council makes no representation and gives no warranty about the accuracy, reliability, completeness or suitability for any particular purpose of the information and the user uses and relies upon the information in this report at its own sole risk and liability. Council is not liable for errors or omissions in this report. To the full extent that it is able to do so in law, the Council disclaims all liability, (including liability in negligence), for any loss, damage or costs, (including indirect and consequential loss and damage), caused by or arising from anyone using or relying on the information in this report for any purpose whatsoever.

Flood information and studies regarding the Brisbane City Council local government area are periodically reviewed and updated by the Council. Changes may be periodically made to the flood study information. These changes may or may not be incorporated in any new version of the flood study publication. It is the responsibility of the user to ensure that the report being referred to is the most current and that the information in such report is the most up-to-date information available.

This report is subject to copyright law. No part may be reproduced by any process except in accordance with the provisions of the Copyright Act 1968.





Brighton Creek Flood Study

Volume 2 of 2 Flood Mapping

Prepared by Brisbane City Council's, City Projects Office

June 2014



Dedicated to a better Brisbane

APPENDIX J - Flood Mapping

Scenario 3 - Ultimate Design Event Maps

- J.1 50% AEP Water Level Contours
- J.2 20% AEP Water Level Contours
- J.3 10% AEP Water Level Contours
- J.4 5% AEP Water Level Contours
- J.5 2% AEP Water Level Contours
- J.6 1% AEP Water Level Contours
- J.7 50% AEP Depth Contours
- J.8 20% AEP Depth Contours
- J.9 10% AEP Depth Contours
- J.10 5% AEP Depth Contours
- J.11 2% AEP Depth Contours
- J.12 1% AEP Depth Contours

Scenario 3 - Ultimate Extreme Event Maps

- J.13 0.5% AEP Water Level Contours
- J.14 0.2% AEP Water Level Contours

Scenario 1 - Existing Design Event Maps

- J.15 50% AEP Flood Extents
- J.16 20% AEP Flood Extents
- J.17 10% AEP Flood Extents
- J.18 5% AEP Flood Extents
- J.19 2% AEP Flood Extents
- J.20 1% AEP Flood Extents

Scenario 1 - Existing Extreme Event Maps

- J.21 0.5% AEP Flood Extents
- J.22 0.2% AEP Flood Extents
- J.23 0.05% AEP Flood Extents



Legend

- Water Level Contour Line (mAHD)
- AMTD Line
- City Plan Waterway Corridors
- Flood Inundation Extent
- Waterway/Waterbody

DATA INFORMATION

The flood maps must be read in conjunction with the flood study report and interpreted by a qualified professional engineer. The flood maps are based on the best data available to Brisbane City Council ("Council") at the time the maps were developed. Council, and the copyright owners listed below, give no warranty in relation to the data (including accuracy, reliability, completeness, currency or suitability) presented in these maps and the user uses and relies upon the data in the maps at its own sole risk and liability. Council is not liable for errors or omissions in the flood maps. To the full extent that it is able to do so in law, the Council disclaims all liability (including without limitation, liability in negligence) for any loss, damage or costs (including indirect and consequential loss and damage), caused by or arising from anyone using or relying on the data contained in the flood maps for any purpose whatsoever.

©Brisbane City Council 2014 (Unless stated below)
 Cadastre © 2006 Department of Natural Resources and Mines 2009 NAVTEQ Street Data © 2008 NAVTEQ;
 2007 Aerial Imagery ©2007 Furgo Spatial Solutions; 2005 Aerial Imagery ©2005 QASCO; 2005 Brisway © 2009
 Melway Publishing; 2005 DigitalGlobe Quickbird Satellite Imagery © 2005 DigitalGlobe; 2002 Contours © 2002 AAMHatch

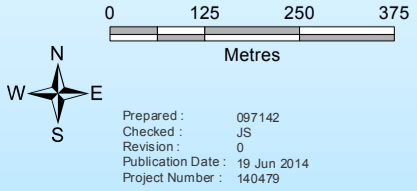
For Information Only - Not Council Policy

Brisbane City Council
 City Projects Office
 GPO Box 1434
 Brisbane Qld 4001
 For more information
 visit www.brisbane.qld.gov.au
 or call (07) 3403 8888



Dedicated to a better Brisbane

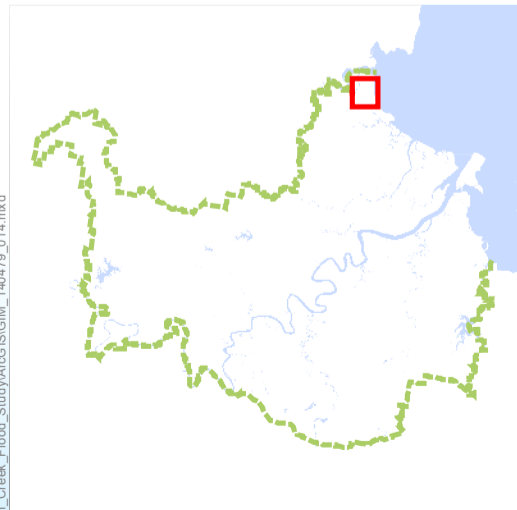
**Brighton Creek
 50% AEP Water Level Map
 Ultimate Scenario
 Figure J.1**



Prepared : 097142
 Checked : JS
 Revision : 0
 Publication Date : 19 Jun 2014
 Project Number : 140479

File : G:\BICD\Proj\14140479_Brighton_Creek_Flood_Study\ArcGIS\GIM_140479_013.mxd

GIM - 140479 - 013



Legend

- Water Level Contour Line (mAHD)
- AMTD Line
- City Plan Waterway Corridors
- Flood Inundation Extent
- Waterway/Waterbody

DATA INFORMATION

The flood maps must be read in conjunction with the flood study report and interpreted by a qualified professional engineer. The flood maps are based on the best data available to Brisbane City Council ("Council") at the time the maps were developed. Council, and the copyright owners listed below, give no warranty in relation to the data (including accuracy, reliability, completeness, currency or suitability) presented in these maps and the user uses and relies upon the data in the maps at its own sole risk and liability. Council is not liable for errors or omissions in the flood maps. To the full extent that it is able to do so in law, the Council disclaims all liability (including without limitation, liability in negligence) for any loss, damage or costs (including indirect and consequential loss and damage), caused by or arising from anyone using or relying on the data contained in the flood maps for any purpose whatsoever.

©Brisbane City Council 2014 (Unless stated below)
 Cadastre © 2006 Department of Natural Resources and Mines 2009 NAVTEQ Street Data © 2008 NAVTEQ;
 2007 Aerial Imagery ©2007 Furgio Spatial Solutions; 2005 Aerial Imagery ©2005 QASCO; 2005 Brisway © 2009
 Melway Publishing; 2005 DigitalGlobe Quickbird Satellite Imagery © 2005 DigitalGlobe; 2002 Contours © 2002 AAMHatch

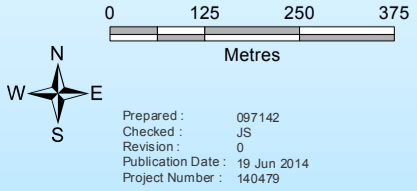
For Information Only - Not Council Policy

Brisbane City Council
 City Projects Office
 GPO Box 1434
 Brisbane Qld 4001
 For more information
 visit www.brisbane.qld.gov.au
 or call (07) 3403 8888



Dedicated to a better Brisbane

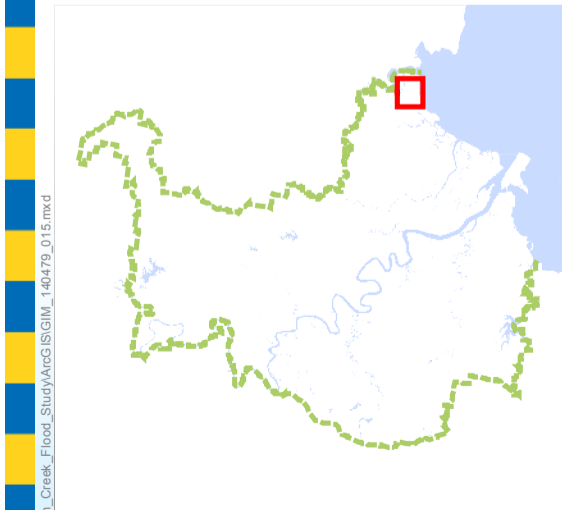
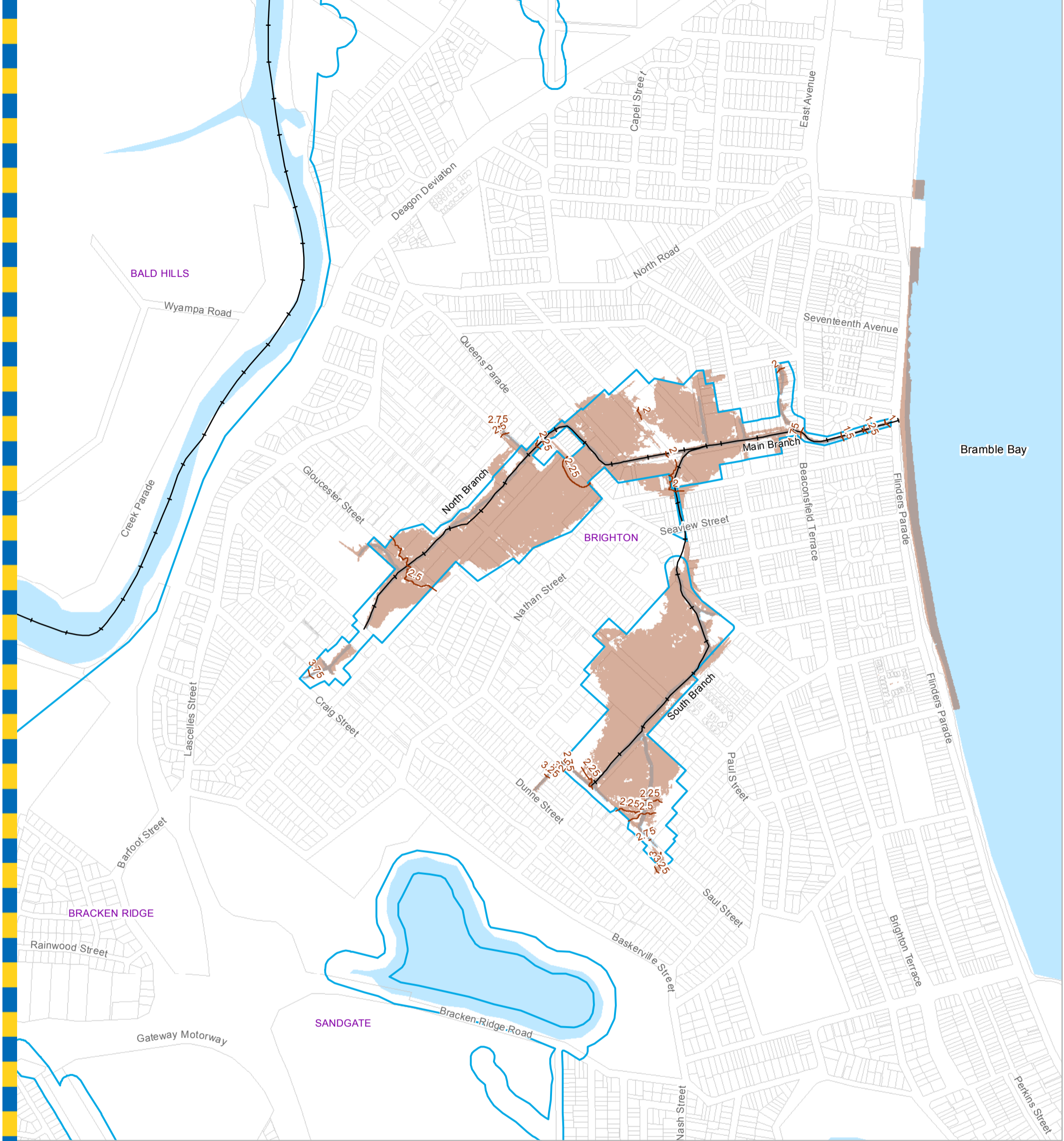
**Brighton Creek
 20% AEP Water Level Map
 Ultimate Scenario
 Figure J.2**



Prepared : 097142
 Checked : JS
 Revision : 0
 Publication Date : 19 Jun 2014
 Project Number : 140479

File : G:\BICD\Proj\14140479_Brighton_Creek_Flood_Study\ArcGIS\GIM_140479_014.mxd

GIM - 140479 - 014



Legend

- Water Level Contour Line (mAHD)
- AMTD Line
- City Plan Waterway Corridors
- Flood Inundation Extent
- Waterway/Waterbody

DATA INFORMATION

The flood maps must be read in conjunction with the flood study report and interpreted by a qualified professional engineer. The flood maps are based on the best data available to Brisbane City Council ("Council") at the time the maps were developed. Council, and the copyright owners listed below, give no warranty in relation to the data (including accuracy, reliability, completeness, currency or suitability) presented in these maps and the user uses and relies upon the data in the maps at its own sole risk and liability. Council is not liable for errors or omissions in the flood maps. To the full extent that it is able to do so in law, the Council disclaims all liability (including without limitation, liability in negligence) for any loss, damage or costs (including indirect and consequential loss and damage), caused by or arising from anyone using or relying on the data contained in the flood maps for any purpose whatsoever.

©Brisbane City Council 2014 (Unless stated below)
 Cadastre © 2006 Department of Natural Resources and Mines 2009 NAVTEQ Street Data © 2008 NAVTEQ;
 2007 Aerial Imagery ©2007 Furgo Spatial Solutions; 2005 Aerial Imagery ©2005 QASCO; 2005 Brisway © 2009
 Melway Publishing; 2005 DigitalGlobe Quickbird Satellite Imagery © 2005 DigitalGlobe; 2002 Contours © 2002 AAMHatch

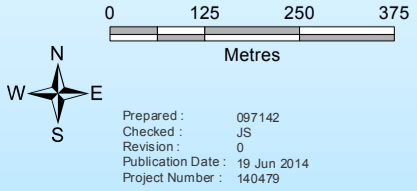
For Information Only - Not Council Policy

Brisbane City Council
 City Projects Office
 GPO Box 1434
 Brisbane Qld 4001
 For more information
 visit www.brisbane.qld.gov.au
 or call (07) 3403 8888



Dedicated to a better Brisbane

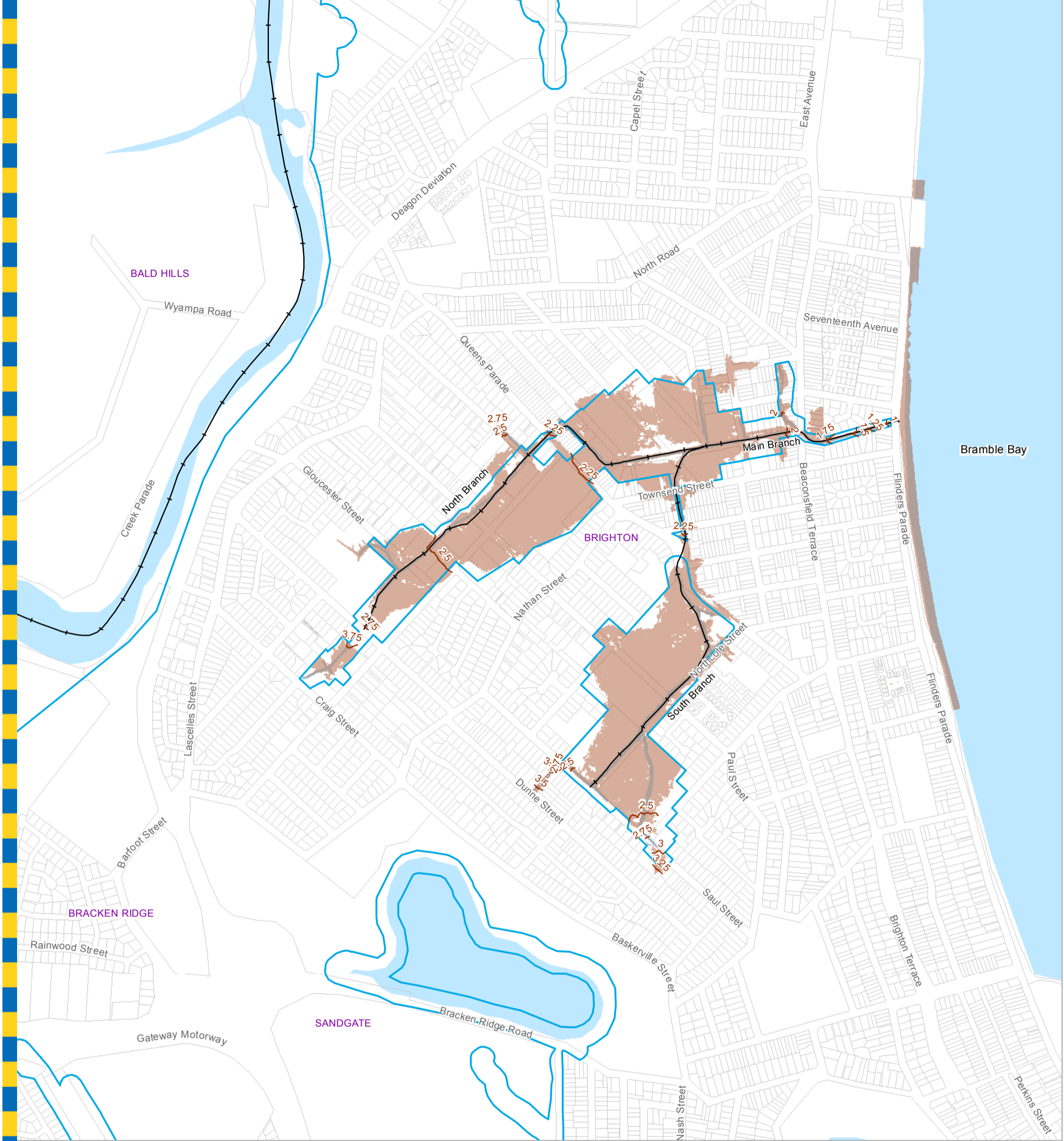
**Brighton Creek
 10% AEP Water Level Map
 Ultimate Scenario
 Figure J.3**



Prepared : 097142
 Checked : JS
 Revision : 0
 Publication Date : 19 Jun 2014
 Project Number : 140479

File : G:\BICD\Proj\14140479_Brighton_Creek_Flood_Study\ArcGIS\GIM_140479_015.mxd

GIM - 140479 - 015



Legend

- Water Level Contour Line (mAHD)
- AMTD Line
- City Plan Waterway Corridors
- Flood Inundation Extent
- Waterway/Waterbody

DATA INFORMATION

The flood maps must be read in conjunction with the flood study report and interpreted by a qualified professional engineer. The flood maps are based on the best data available to Brisbane City Council ("Council") at the time the maps were developed. Council, and the copyright owners listed below, give no warranty in relation to the data (including accuracy, reliability, completeness, currency or suitability) presented in these maps and the user uses and relies upon the data in the maps at its own sole risk and liability. Council is not liable for errors or omissions in the flood maps. To the full extent that it is able to do so in law, the Council disclaims all liability (including without limitation, liability in negligence) for any loss, damage or costs (including indirect and consequential loss and damage), caused by or arising from anyone using or relying on the data contained in the flood maps for any purpose whatsoever.

©Brisbane City Council 2014 (Unless stated below)
 Cadastre © 2006 Department of Natural Resources and Mines 2009 NAVTEQ Street Data © 2008 NAVTEQ;
 2007 Aerial Imagery ©2007 Furgo Spatial Solutions; 2005 Aerial Imagery ©2005 QASCO; 2005 Brisway © 2009
 Melway Publishing; 2005 DigitalGlobe Quickbird Satellite Imagery © 2005 DigitalGlobe; 2002 Contours © 2002 AAMHatch

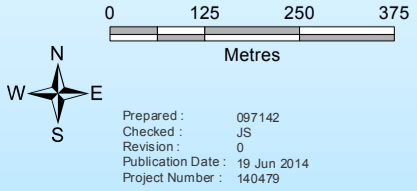
For Information Only - Not Council Policy

Brisbane City Council
 City Projects Office
 GPO Box 1434
 Brisbane Qld 4001
 For more information
 visit www.brisbane.qld.gov.au
 or call (07) 3403 8888

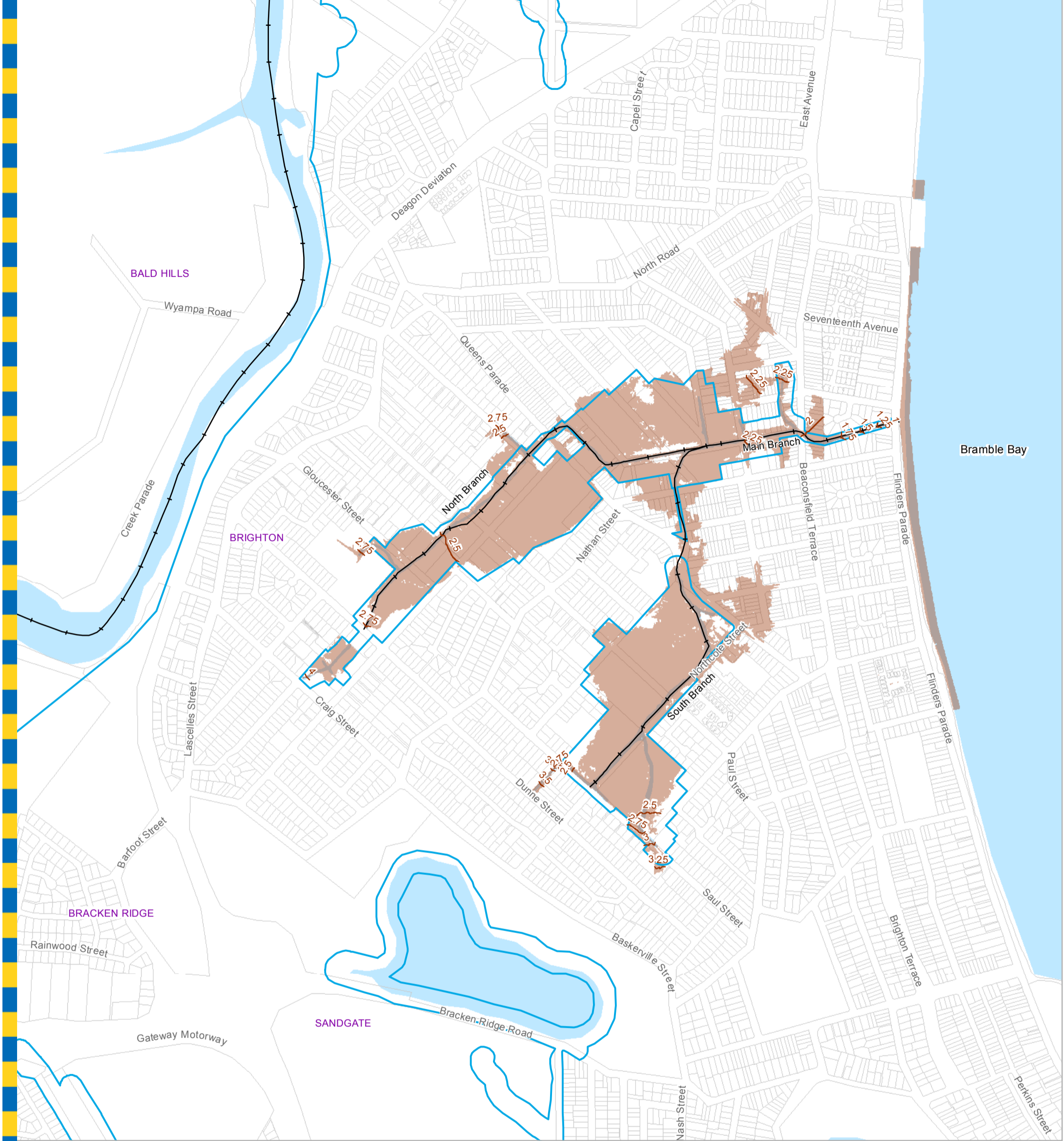


Dedicated to a better Brisbane

**Brighton Creek
 5% AEP Water Level Map
 Ultimate Scenario
 Figure J.4**



Prepared : 097142
 Checked : JS
 Revision : 0
 Publication Date : 19 Jun 2014
 Project Number : 140479



Legend

- Water Level Contour Line (mAHD)
- AMTD Line
- City Plan Waterway Corridors
- Flood Inundation Extent
- Waterway/Waterbody

DATA INFORMATION

The flood maps must be read in conjunction with the flood study report and interpreted by a qualified professional engineer. The flood maps are based on the best data available to Brisbane City Council ("Council") at the time the maps were developed. Council, and the copyright owners listed below, give no warranty in relation to the data (including accuracy, reliability, completeness, currency or suitability) presented in these maps and the user uses and relies upon the data in the maps at its own sole risk and liability. Council is not liable for errors or omissions in the flood maps. To the full extent that it is able to do so in law, the Council disclaims all liability (including without limitation, liability in negligence) for any loss, damage or costs (including indirect and consequential loss and damage), caused by or arising from anyone using or relying on the data contained in the flood maps for any purpose whatsoever.

©Brisbane City Council 2014 (Unless stated below)
 Cadastre © 2006 Department of Natural Resources and Mines 2009 NAVTEQ Street Data © 2008 NAVTEQ;
 2007 Aerial Imagery ©2007 Furgio Spatial Solutions; 2005 Aerial Imagery ©2005 QASCO; 2005 Brisway © 2009
 Melway Publishing; 2005 DigitalGlobe Quickbird Satellite Imagery © 2005 DigitalGlobe; 2002 Contours © 2002 AAMHatch

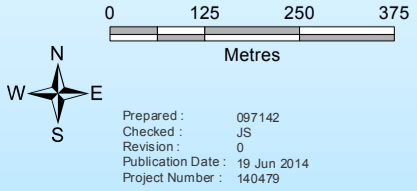
For Information Only - Not Council Policy

Brisbane City Council
 City Projects Office
 GPO Box 1434
 Brisbane Qld 4001
 For more information
 visit www.brisbane.qld.gov.au
 or call (07) 3403 8888



Dedicated to a better Brisbane

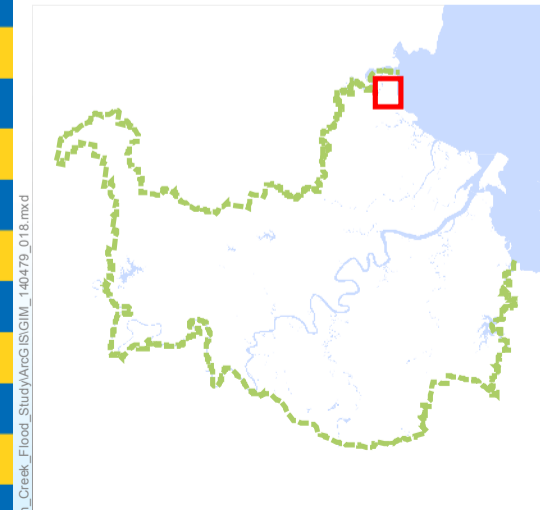
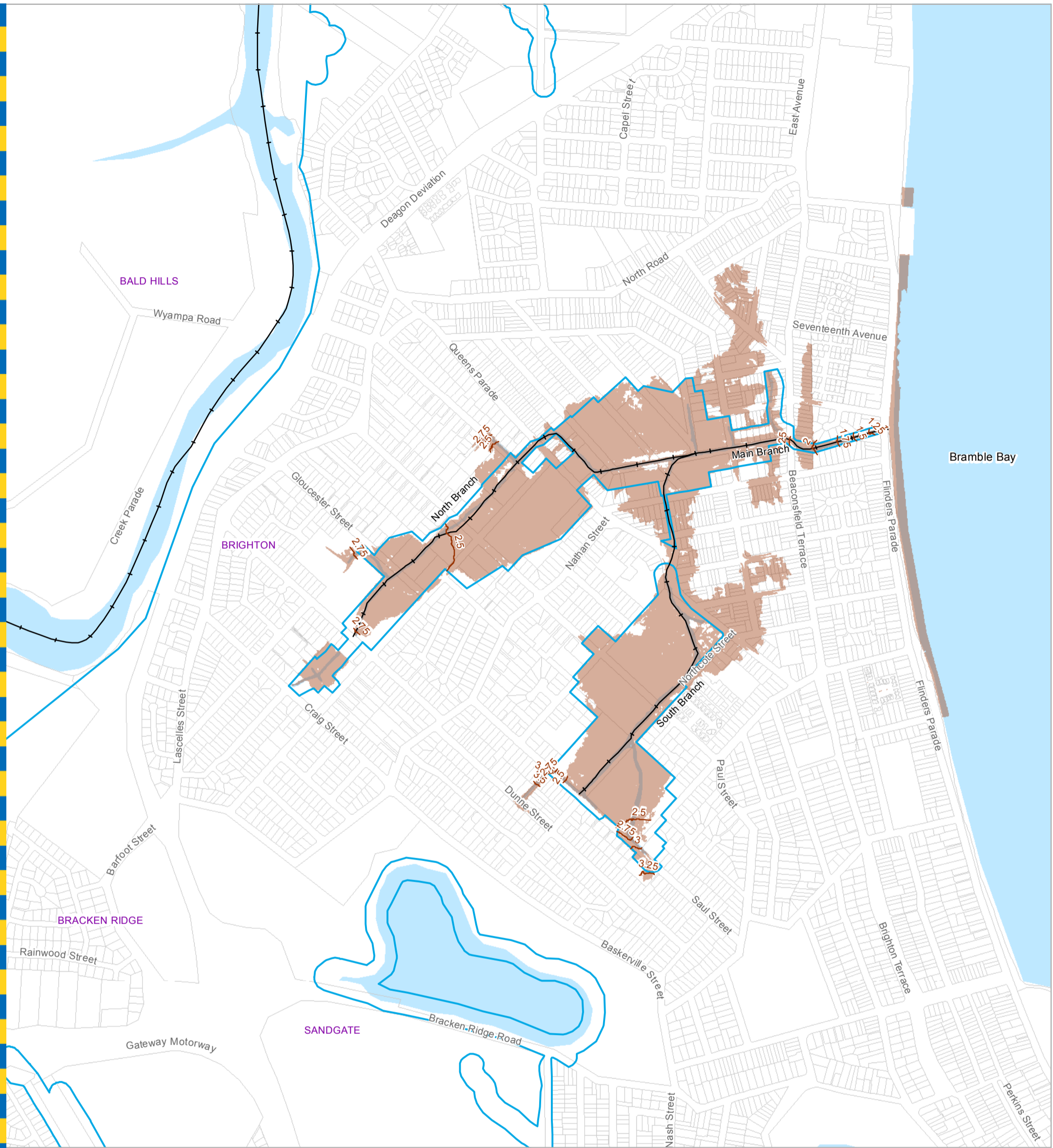
**Brighton Creek
 2% AEP Water Level Map
 Ultimate Scenario
 Figure J.5**



Prepared : 097142
 Checked : JS
 Revision : 0
 Publication Date : 19 Jun 2014
 Project Number : 140479

File : G:\BICD\Proj\14140479_Brighton_Creek_Flood_Study\ArcGIS\GIM_140479_017.mxd

GIM - 140479 - 017



Legend

- Water Level Contour Line (mAHD)
- AMTD Line
- City Plan Waterway Corridors
- Flood Inundation Extent
- Waterway/Waterbody

DATA INFORMATION

The flood maps must be read in conjunction with the flood study report and interpreted by a qualified professional engineer. The flood maps are based on the best data available to Brisbane City Council ("Council") at the time the maps were developed. Council, and the copyright owners listed below, give no warranty in relation to the data (including accuracy, reliability, completeness, currency or suitability) presented in these maps and the user uses and relies upon the data in the maps at its own sole risk and liability. Council is not liable for errors or omissions in the flood maps. To the full extent that it is able to do so in law, the Council disclaims all liability (including without limitation, liability in negligence) for any loss, damage or costs (including indirect and consequential loss and damage), caused by or arising from anyone using or relying on the data contained in the flood maps for any purpose whatsoever.

©Brisbane City Council 2014 (Unless stated below)
 Cadastre © 2006 Department of Natural Resources and Mines 2009 NAVTEQ Street Data © 2008 NAVTEQ;
 2007 Aerial Imagery ©2007 Furgo Spatial Solutions; 2005 Aerial Imagery ©2005 QASCO; 2005 Brisway © 2009
 Melway Publishing; 2005 DigitalGlobe Quickbird Satellite Imagery © 2005 DigitalGlobe; 2002 Contours © 2002 AAMHatch

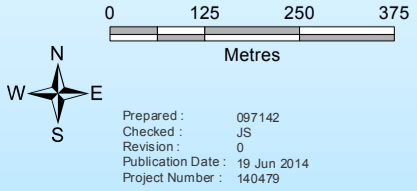
For Information Only - Not Council Policy

Brisbane City Council
 City Projects Office
 GPO Box 1434
 Brisbane Qld 4001
 For more information
 visit www.brisbane.qld.gov.au
 or call (07) 3403 8888

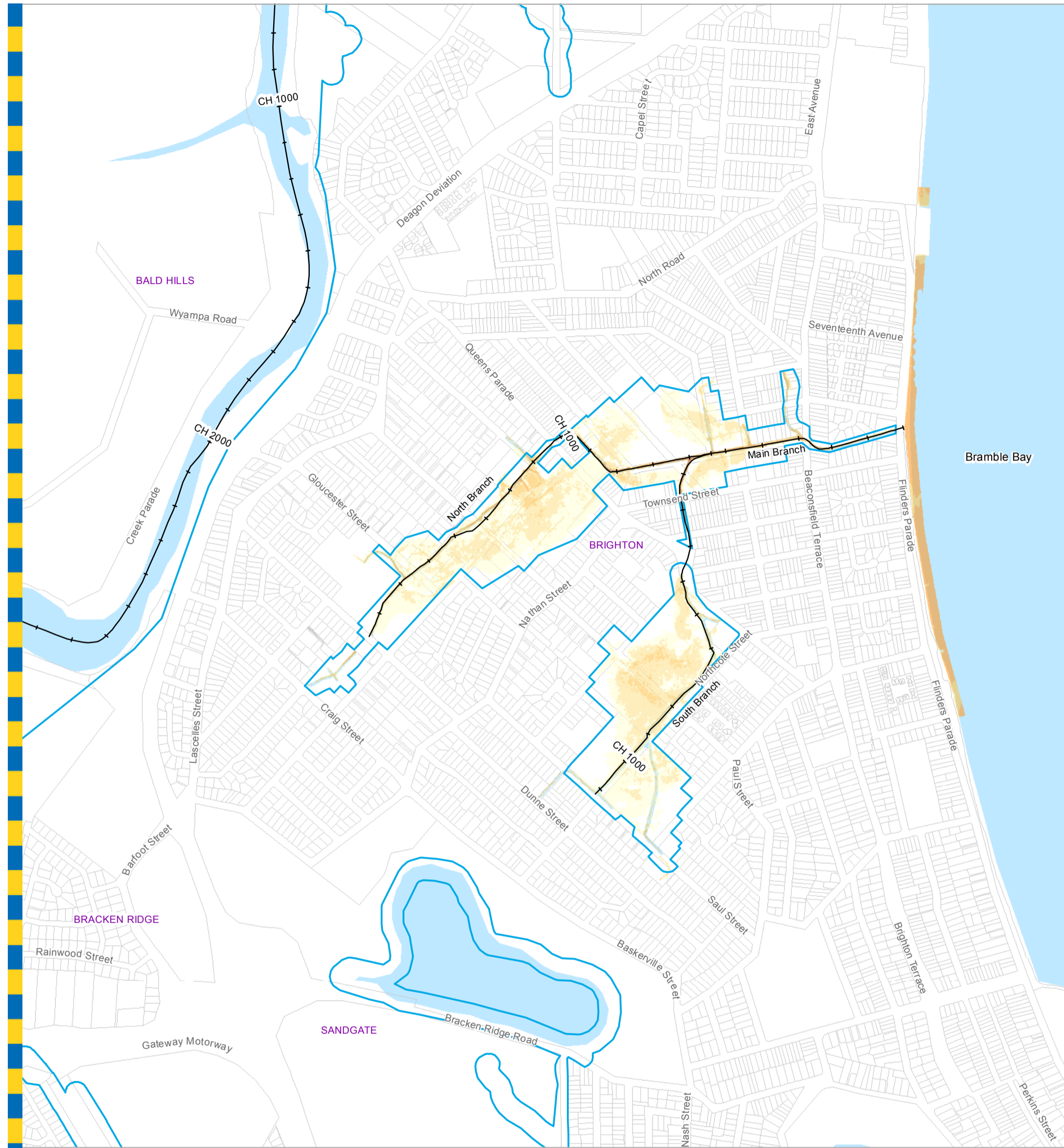


Dedicated to a better Brisbane

**Brighton Creek
 1% AEP Water Level Map
 Ultimate Scenario
 Figure J.6**



Prepared : 097142
 Checked : JS
 Revision : 0
 Publication Date : 19 Jun 2014
 Project Number : 140479



Legend

- +— AMTD Line
 - Waterway Corridors
 - Waterway/Waterbody
- | Depth (m) | |
|-----------|------------------|
| □ | Less than 0.3 |
| □ | 0.3 to 0.6 |
| □ | 0.6 to 0.9 |
| □ | 0.9 to 1.2 |
| □ | 1.2 to 1.5 |
| □ | Greater than 1.5 |

DATA INFORMATION

The flood maps must be read in conjunction with the flood study report and interpreted by a qualified professional engineer. The flood maps are based on the best data available to Brisbane City Council ("Council") at the time the maps were developed. Council, and the copyright owners listed below, give no warranty in relation to the data (including accuracy, reliability, completeness, currency or suitability) presented in these maps and the user uses and relies upon the data in the maps at its own sole risk and liability. Council is not liable for errors or omissions in the flood maps. To the full extent that it is able to do so in law, the Council disclaims all liability (including without limitation, liability in negligence) for any loss, damage or costs (including indirect and consequential loss and damage), caused by or arising from anyone using or relying on the data contained in the flood maps for any purpose whatsoever.

©Brisbane City Council 2014 (Unless stated below)
 Cadastre © 2006 Department of Natural Resources and Mines 2009 NAVTEQ Street Data © 2008 NAVTEQ;
 2007 Aerial Imagery ©2007 Furgio Spatial Solutions; 2005 Aerial Imagery ©2005 QASCO; 2005 Brisway © 2009
 Melway Publishing; 2005 DigitalGlobe Quickbird Satellite Imagery © 2005 DigitalGlobe; 2002 Contours © 2002 AAMHatch

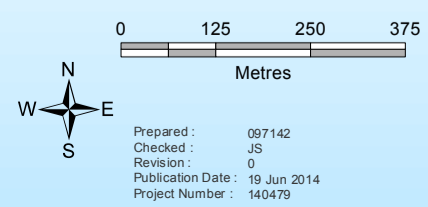
For Information Only - Not Council Policy

Brisbane City Council
 City Projects Office
 GPO Box 1434
 Brisbane Qld 4001
 For more information
 visit www.brisbane.qld.gov.au
 or call (07) 3403 8888



Dedicated to a better Brisbane

**Brighton Creek
 50% AEP Depth Map
 Ultimate Scenario
 Figure J.7**



Prepared : 097142
 Checked : JS
 Revision : 0
 Publication Date : 19 Jun 2014
 Project Number : 140479



Legend

- +— AMTD Line
 - Waterway Corridors
 - Waterway/Waterbody
- | Depth (m) | |
|-----------|------------------|
| □ | Less than 0.3 |
| □ | 0.3 to 0.6 |
| □ | 0.6 to 0.9 |
| □ | 0.9 to 1.2 |
| □ | 1.2 to 1.5 |
| □ | Greater than 1.5 |

DATA INFORMATION

The flood maps must be read in conjunction with the flood study report and interpreted by a qualified professional engineer. The flood maps are based on the best data available to Brisbane City Council ("Council") at the time the maps were developed. Council, and the copyright owners listed below, give no warranty in relation to the data (including accuracy, reliability, completeness, currency or suitability) presented in these maps and the user uses and relies upon the data in the maps at its own sole risk and liability. Council is not liable for errors or omissions in the flood maps. To the full extent that it is able to do so in law, the Council disclaims all liability (including without limitation, liability in negligence) for any loss, damage or costs (including indirect and consequential loss and damage), caused by or arising from anyone using or relying on the data contained in the flood maps for any purpose whatsoever.

©Brisbane City Council 2014 (Unless stated below)
 Cadastre © 2006 Department of Natural Resources and Mines 2009 NAVTEQ Street Data © 2008 NAVTEQ;
 2007 Aerial Imagery ©2007 Furgo Spatial Solutions; 2005 Aerial Imagery ©2005 QASCO; 2005 Brisway © 2009
 Melway Publishing; 2005 DigitalGlobe Quickbird Satellite Imagery © 2005 DigitalGlobe; 2002 Contours © 2002 AAMHatch

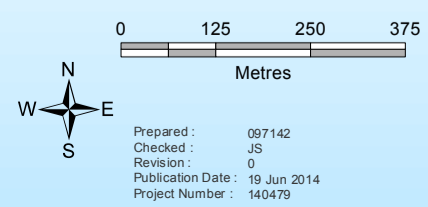
For Information Only - Not Council Policy

Brisbane City Council
 City Projects Office
 GPO Box 1434
 Brisbane Qld 4001
 For more information
 visit www.brisbane.qld.gov.au
 or call (07) 3403 8888



Dedicated to a better Brisbane

**Brighton Creek
 20% AEP Depth Map
 Ultimate Scenario
 Figure J.8**



File: G:\BICD\Proj\140479_Brighton_Creek_Flood_Study\ArcGIS\GIM_140479_020.mxd

GIM - 140479 - 020



Legend

- +— AMTD Line
 - Waterway Corridors
 - Waterway/Waterbody
- | Depth (m) | |
|-----------|------------------|
| □ | Less than 0.3 |
| □ | 0.3 to 0.6 |
| □ | 0.6 to 0.9 |
| □ | 0.9 to 1.2 |
| □ | 1.2 to 1.5 |
| □ | Greater than 1.5 |

DATA INFORMATION

The flood maps must be read in conjunction with the flood study report and interpreted by a qualified professional engineer. The flood maps are based on the best data available to Brisbane City Council ("Council") at the time the maps were developed. Council, and the copyright owners listed below, give no warranty in relation to the data (including accuracy, reliability, completeness, currency or suitability) presented in these maps and the user uses and relies upon the data in the maps at its own sole risk and liability. Council is not liable for errors or omissions in the flood maps. To the full extent that it is able to do so in law, the Council disclaims all liability (including without limitation, liability in negligence) for any loss, damage or costs (including indirect and consequential loss and damage), caused by or arising from anyone using or relying on the data contained in the flood maps for any purpose whatsoever.

©Brisbane City Council 2014 (Unless stated below)
 Cadastre © 2006 Department of Natural Resources and Mines 2009 NAVTEQ Street Data © 2008 NAVTEQ;
 2007 Aerial Imagery ©2007 Furgo Spatial Solutions; 2005 Aerial Imagery ©2005 QASCO; 2005 Brisway © 2009
 Melway Publishing; 2005 DigitalGlobe Quickbird Satellite Imagery © 2005 DigitalGlobe; 2002 Contours © 2002 AAMHatch

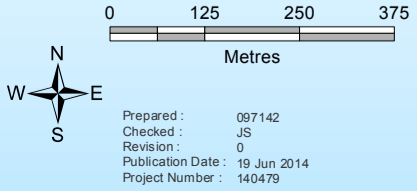
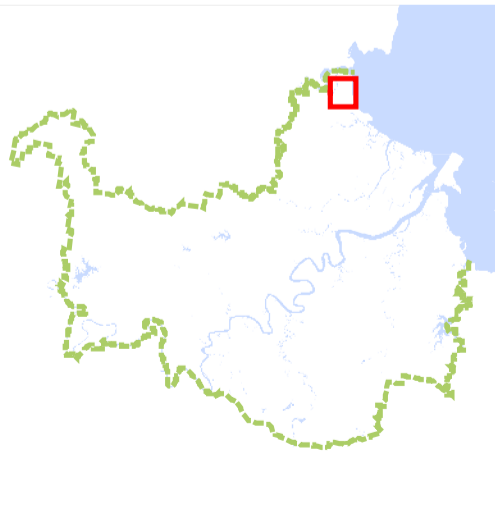
For Information Only - Not Council Policy

Brisbane City Council
 City Projects Office
 GPO Box 1434
 Brisbane Qld 4001
 For more information
 visit www.brisbane.qld.gov.au
 or call (07) 3403 8888



Dedicated to a better Brisbane

**Brighton Creek
 10% AEP Depth Map
 Ultimate Scenario
 Figure J.9**





Legend

- +— AMTD Line
 - Waterway Corridors
 - Waterway/Waterbody
- | Depth (m) | |
|-----------|------------------|
| □ | Less than 0.3 |
| □ | 0.3 to 0.6 |
| □ | 0.6 to 0.9 |
| □ | 0.9 to 1.2 |
| □ | 1.2 to 1.5 |
| □ | Greater than 1.5 |

DATA INFORMATION

The flood maps must be read in conjunction with the flood study report and interpreted by a qualified professional engineer. The flood maps are based on the best data available to Brisbane City Council ("Council") at the time the maps were developed. Council, and the copyright owners listed below, give no warranty in relation to the data (including accuracy, reliability, completeness, currency or suitability) presented in these maps and the user uses and relies upon the data in the maps at its own sole risk and liability. Council is not liable for errors or omissions in the flood maps. To the full extent that it is able to do so in law, the Council disclaims all liability (including without limitation, liability in negligence) for any loss, damage or costs (including indirect and consequential loss and damage), caused by or arising from anyone using or relying on the data contained in the flood maps for any purpose whatsoever.

©Brisbane City Council 2014 (Unless stated below)
 Cadastre © 2006 Department of Natural Resources and Mines 2009 NAVTEQ Street Data © 2008 NAVTEQ;
 2007 Aerial Imagery ©2007 Furgo Spatial Solutions; 2005 Aerial Imagery ©2005 QASCO; 2005 Brisway © 2009
 Melway Publishing; 2005 DigitalGlobe Quickbird Satellite Imagery © 2005 DigitalGlobe; 2002 Contours © 2002 AAMHatch

For Information Only - Not Council Policy

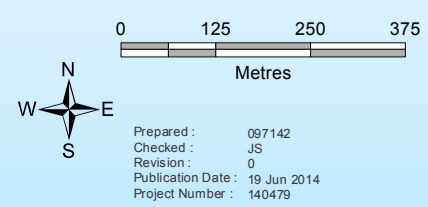
Brisbane City Council
 City Projects Office
 GPO Box 1434
 Brisbane Qld 4001
 For more information
 visit www.brisbane.qld.gov.au
 or call (07) 3403 8888



Dedicated to a better Brisbane

**Brighton Creek
 5% AEP Depth Map
 Ultimate Scenario**

Figure J.10



Prepared : 097142
 Checked : JS
 Revision : 0
 Publication Date : 19 Jun 2014
 Project Number : 140479

File : G:\BICD\Proj\140479_Brighton_Creek_Flood_Study\ArcGIS\GIM_140479_022.mxd

GIM - 140479 - 022



For Information Only - Not Council Policy



Legend

- +— AMTD Line
 - Waterway Corridors
 - Waterway/Waterbody
- | Depth (m) | |
|-----------|------------------|
| □ | Less than 0.3 |
| □ | 0.3 to 0.6 |
| □ | 0.6 to 0.9 |
| □ | 0.9 to 1.2 |
| □ | 1.2 to 1.5 |
| □ | Greater than 1.5 |

DATA INFORMATION

The flood maps must be read in conjunction with the flood study report and interpreted by a qualified professional engineer. The flood maps are based on the best data available to Brisbane City Council ("Council") at the time the maps were developed. Council, and the copyright owners listed below, give no warranty in relation to the data (including accuracy, reliability, completeness, currency or suitability) presented in these maps and the user uses and relies upon the data in the maps at its own sole risk and liability. Council is not liable for errors or omissions in the flood maps. To the full extent that it is able to do so in law, the Council disclaims all liability (including without limitation, liability in negligence) for any loss, damage or costs (including indirect and consequential loss and damage), caused by or arising from anyone using or relying on the data contained in the flood maps for any purpose whatsoever.

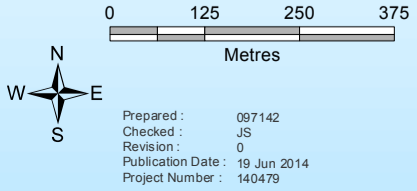
Brisbane City Council
 City Projects Office
 GPO Box 1434
 Brisbane Qld 4001
 For more information
 visit www.brisbane.qld.gov.au
 or call (07) 3403 8888



Dedicated to a better Brisbane

**Brighton Creek
 2% AEP Depth Map
 Ultimate Scenario**

Figure J.11



Prepared : 097142
 Checked : JS
 Revision : 0
 Publication Date : 19 Jun 2014
 Project Number : 140479

©Brisbane City Council 2014 (Unless stated below)
 Cadastre © 2006 Department of Natural Resources and Mines 2009 NAVTEQ Street Data © 2008 NAVTEQ;
 2007 Aerial Imagery ©2007 Furgo Spatial Solutions; 2005 Aerial Imagery ©2005 QASCO; 2005 Brisway © 2009
 Melway Publishing; 2005 DigitalGlobe Quickbird Satellite Imagery © 2005 DigitalGlobe; 2002 Contours © 2002 AAMHatch



For Information Only - Not Council Policy



Legend

- +— AMTD Line
 - Waterway Corridors
 - Waterway/Waterbody
- | Depth (m) | |
|-----------|------------------|
| □ | Less than 0.3 |
| □ | 0.3 to 0.6 |
| □ | 0.6 to 0.9 |
| □ | 0.9 to 1.2 |
| □ | 1.2 to 1.5 |
| □ | Greater than 1.5 |

DATA INFORMATION

The flood maps must be read in conjunction with the flood study report and interpreted by a qualified professional engineer. The flood maps are based on the best data available to Brisbane City Council ("Council") at the time the maps were developed. Council, and the copyright owners listed below, give no warranty in relation to the data (including accuracy, reliability, completeness, currency or suitability) presented in these maps and the user uses and relies upon the data in the maps at its own sole risk and liability. Council is not liable for errors or omissions in the flood maps. To the full extent that it is able to do so in law, the Council disclaims all liability (including without limitation, liability in negligence) for any loss, damage or costs (including indirect and consequential loss and damage), caused by or arising from anyone using or relying on the data contained in the flood maps for any purpose whatsoever.

©Brisbane City Council 2014 (Unless stated below)
 Cadastre © 2006 Department of Natural Resources and Mines 2009 NAVTEQ Street Data © 2008 NAVTEQ;
 2007 Aerial Imagery ©2007 Furgio Spatial Solutions; 2005 Aerial Imagery ©2005 QASCO; 2005 Brisway © 2009
 Melway Publishing; 2005 DigitalGlobe Quickbird Satellite Imagery © 2005 DigitalGlobe; 2002 Contours © 2002 AAMHatch

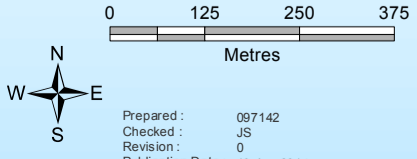
Brisbane City Council
 City Projects Office
 GPO Box 1434
 Brisbane Qld 4001
 For more information
 visit www.brisbane.qld.gov.au
 or call (07) 3403 8888



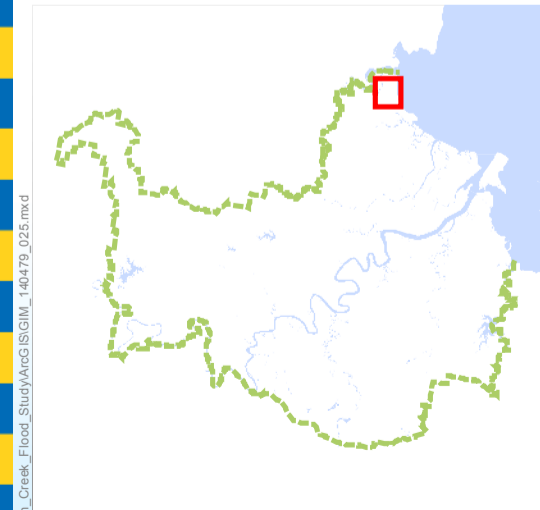
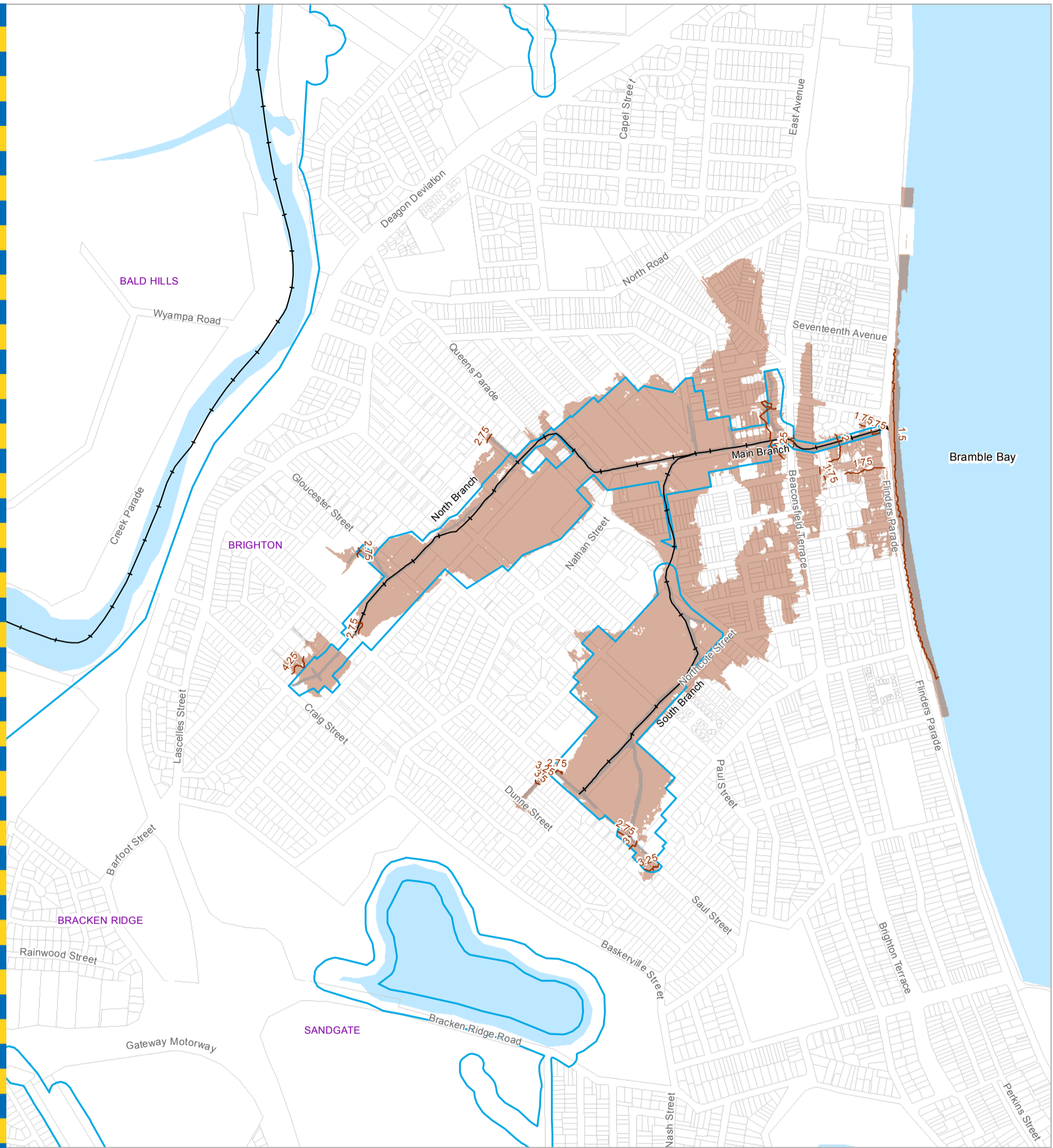
Dedicated to a better Brisbane

**Brighton Creek
 1% AEP Depth Map
 Ultimate Scenario**

Figure J.12



Prepared : 097142
 Checked : JS
 Revision : 0
 Publication Date : 19 Jun 2014
 Project Number : 140479



Legend

- Water Level Contour Line (mAHD)
- AMTD Line
- City Plan Waterway Corridors
- Flood Inundation Extent
- Waterway/Waterbody

DATA INFORMATION

The flood maps must be read in conjunction with the flood study report and interpreted by a qualified professional engineer. The flood maps are based on the best data available to Brisbane City Council ("Council") at the time the maps were developed. Council, and the copyright owners listed below, give no warranty in relation to the data (including accuracy, reliability, completeness, currency or suitability) presented in these maps and the user uses and relies upon the data in the maps at its own sole risk and liability. Council is not liable for errors or omissions in the flood maps. To the full extent that it is able to do so in law, the Council disclaims all liability (including without limitation, liability in negligence) for any loss, damage or costs (including indirect and consequential loss and damage), caused by or arising from anyone using or relying on the data contained in the flood maps for any purpose whatsoever.

©Brisbane City Council 2014 (Unless stated below)
 Cadastre © 2006 Department of Natural Resources and Mines 2009 NAVTEQ Street Data © 2008 NAVTEQ;
 2007 Aerial Imagery ©2007 Furgo Spatial Solutions; 2005 Aerial Imagery ©2005 QASCO; 2005 Brisway © 2009
 Melway Publishing; 2005 DigitalGlobe Quickbird Satellite Imagery © 2005 DigitalGlobe; 2002 Contours © 2002 AAMHatch

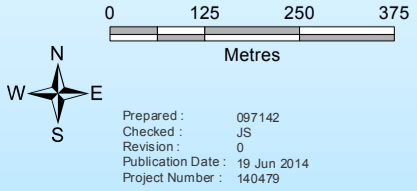
For Information Only - Not Council Policy

Brisbane City Council
 City Projects Office
 GPO Box 1434
 Brisbane Qld 4001
 For more information
 visit www.brisbane.qld.gov.au
 or call (07) 3403 8888



Dedicated to a better Brisbane

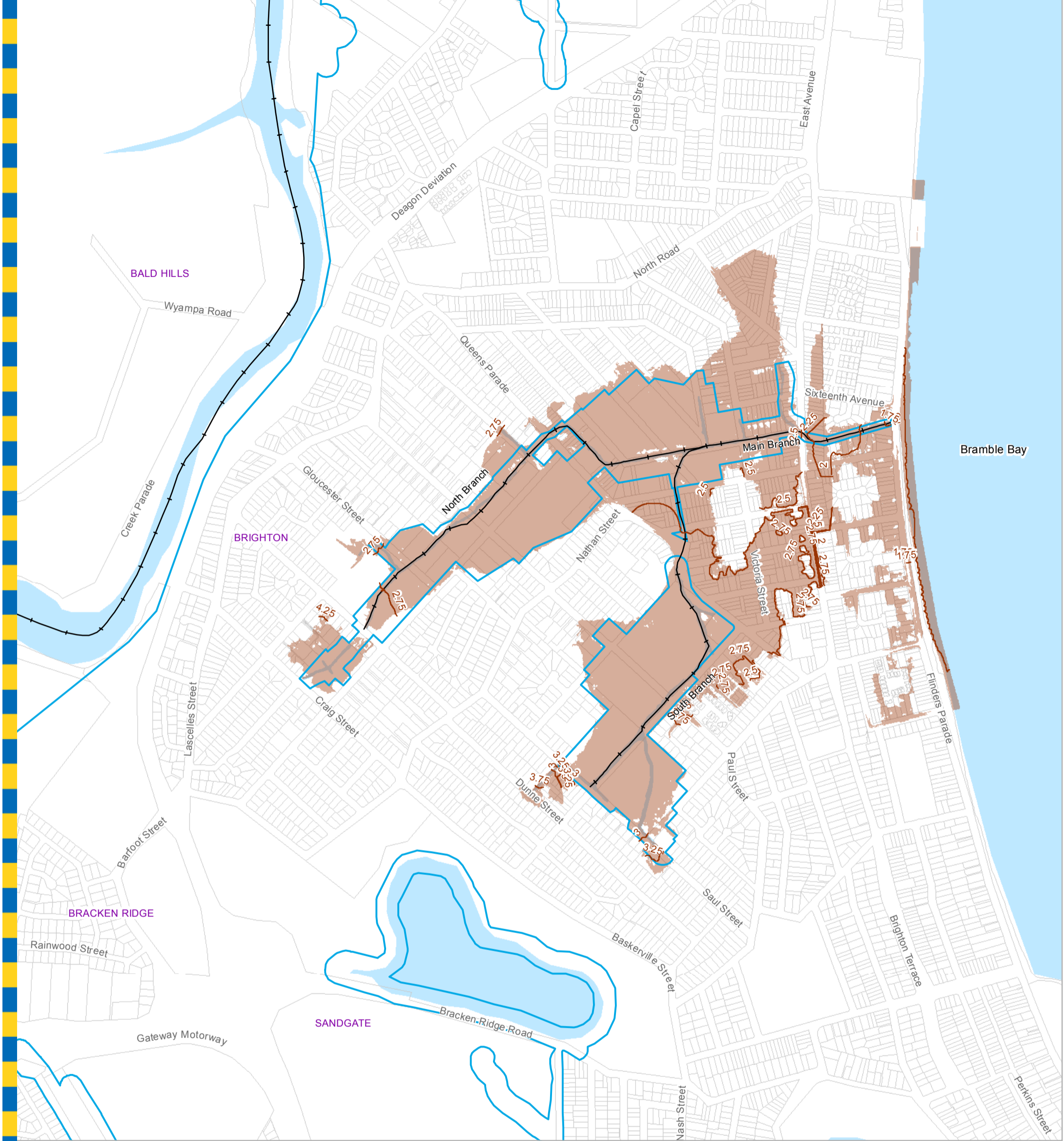
**Brighton Creek
 0.5% AEP Water Level Map
 Ultimate Scenario
 Figure J.13**



Prepared : 097142
 Checked : JS
 Revision : 0
 Publication Date : 19 Jun 2014
 Project Number : 140479

File : G:\BICD\Proj\140479_Brighton_Creek_Flood_Study\ArcGIS\GIM_140479_025.mxd

GIM - 140479 - 025



Legend

- Water Level Contour Line (mAHD)
- AMTD Line
- City Plan Waterway Corridors
- Flood Inundation Extent
- Waterway/Waterbody

DATA INFORMATION

The flood maps must be read in conjunction with the flood study report and interpreted by a qualified professional engineer. The flood maps are based on the best data available to Brisbane City Council ("Council") at the time the maps were developed. Council, and the copyright owners listed below, give no warranty in relation to the data (including accuracy, reliability, completeness, currency or suitability) presented in these maps and the user uses and relies upon the data in the maps at its own sole risk and liability. Council is not liable for errors or omissions in the flood maps. To the full extent that it is able to do so in law, the Council disclaims all liability (including without limitation, liability in negligence) for any loss, damage or costs (including indirect and consequential loss and damage), caused by or arising from anyone using or relying on the data contained in the flood maps for any purpose whatsoever.

©Brisbane City Council 2014 (Unless stated below)
 Cadastre © 2006 Department of Natural Resources and Mines 2009 NAVTEQ Street Data © 2008 NAVTEQ;
 2007 Aerial Imagery ©2007 Furgio Spatial Solutions; 2005 Aerial Imagery ©2005 QASCO; 2005 Brisway © 2009
 Melway Publishing; 2005 DigitalGlobe Quickbird Satellite Imagery © 2005 DigitalGlobe; 2002 Contours © 2002 AAMHatch

For Information Only - Not Council Policy

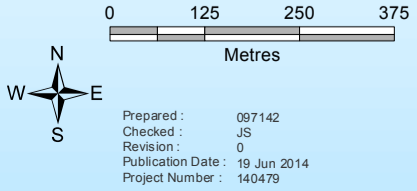
Brisbane City Council
 City Projects Office
 GPO Box 1434
 Brisbane Qld 4001
 For more information
 visit www.brisbane.qld.gov.au
 or call (07) 3403 8888



Dedicated to a better Brisbane

**Brighton Creek
 0.2% AEP Water Level Map
 Ultimate Scenario**

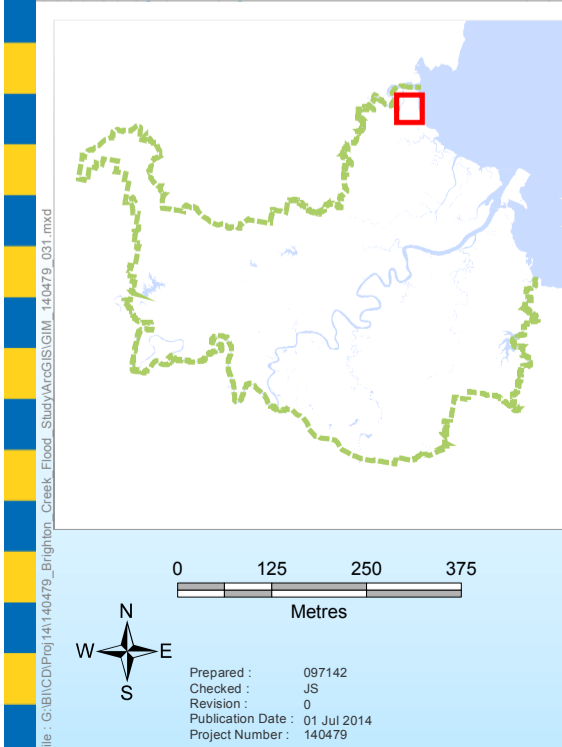
Figure J.14



Prepared : 097142
 Checked : JS
 Revision : 0
 Publication Date : 19 Jun 2014
 Project Number : 140479

File : G:\BICD\Proj\140479_Brighton_Creek_Flood_Study\ArcGIS\GIM_140479_026.mxd

GIM - 140479 - 026



- Legend**
- +— AMTD Line
 - City Plan Waterway Corridors
 - Flood Inundation Extent
 - Waterway/Waterbody

DATA INFORMATION

The flood maps must be read in conjunction with the flood study report and interpreted by a qualified professional engineer. The flood maps are based on the best data available to Brisbane City Council ("Council") at the time the maps were developed. Council, and the copyright owners listed below, give no warranty in relation to the data (including accuracy, reliability, completeness, currency or suitability) presented in these maps and the user uses and relies upon the data in the maps at its own sole risk and liability. Council is not liable for errors or omissions in the flood maps. To the full extent that it is able to do so in law, the Council disclaims all liability (including without limitation, liability in negligence) for any loss, damage or costs (including indirect and consequential loss and damage), caused by or arising from anyone using or relying on the data contained in the flood maps for any purpose whatsoever.

©Brisbane City Council 2014 (Unless stated below)
 Cadastre © 2006 Department of Natural Resources and Mines 2009 NAVTEQ Street Data © 2008 NAVTEQ;
 2007 Aerial Imagery ©2007 Furgo Spatial Solutions; 2005 Aerial Imagery ©2005 QASCO; 2005 Brisway © 2009
 Melway Publishing; 2005 DigitalGlobe Quickbird Satellite Imagery © 2005 DigitalGlobe; 2002 Contours © 2002 AAMHatch

For Information Only - Not Council Policy

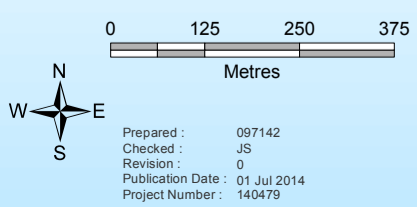
Brisbane City Council
 City Projects Office
 GPO Box 1434
 Brisbane Qld 4001
 For more information
 visit www.brisbane.qld.gov.au
 or call (07) 3403 8888



Dedicated to a better Brisbane

**Brighton Creek
 50% AEP Flood Extent Map
 Existing Scenario**

Figure J.15



Prepared : 097142
 Checked : JS
 Revision : 0
 Publication Date : 01 Jul 2014
 Project Number : 140479

File: G:\BICD\Proj\14140479_Brighton_Creek_Flood_Study\ArcGIS\GIM_140479_031.mxd

GIM - 140479 - 031



For Information Only - Not Council Policy

Brisbane City Council
 City Projects Office
 GPO Box 1434
 Brisbane Qld 4001
 For more information
 visit www.brisbane.qld.gov.au
 or call (07) 3403 8888



Dedicated to a better Brisbane

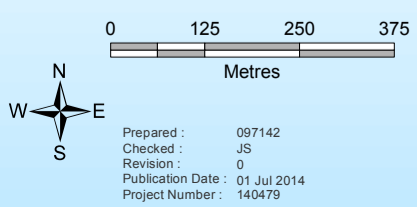
Legend

- +— AMTD Line
- City Plan Waterway Corridors
- Flood Inundation Extent
- Waterway/Waterbody

DATA INFORMATION

The flood maps must be read in conjunction with the flood study report and interpreted by a qualified professional engineer. The flood maps are based on the best data available to Brisbane City Council ("Council") at the time the maps were developed. Council, and the copyright owners listed below, give no warranty in relation to the data (including accuracy, reliability, completeness, currency or suitability) presented in these maps and the user uses and relies upon the data in the maps at its own sole risk and liability. Council is not liable for errors or omissions in the flood maps. To the full extent that it is able to do so in law, the Council disclaims all liability (including without limitation, liability in negligence) for any loss, damage or costs (including indirect and consequential loss and damage), caused by or arising from anyone using or relying on the data contained in the flood maps for any purpose whatsoever.

©Brisbane City Council 2014 (Unless stated below)
 Cadastre © 2006 Department of Natural Resources and Mines 2009 NAVTEQ Street Data © 2008 NAVTEQ;
 2007 Aerial Imagery ©2007 Furgo Spatial Solutions; 2005 Aerial Imagery ©2005 QASCO; 2005 Brisway © 2009
 Melway Publishing; 2005 DigitalGlobe Quickbird Satellite Imagery © 2005 DigitalGlobe; 2002 Contours © 2002 AAMHatch



**Brighton Creek
 20% AEP Flood Extent Map
 Existing Scenario
 Figure J.16**

File: G:\BICD\Proj\14140479_Brighton_Creek_Flood_Study\ArcGIS\GIM_140479_032.mxd

GIM - 140479 - 032



For Information Only - Not Council Policy

Brisbane City Council
 City Projects Office
 GPO Box 1434
 Brisbane Qld 4001
 For more information
 visit www.brisbane.qld.gov.au
 or call (07) 3403 8888



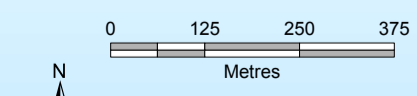
Dedicated to a better Brisbane

- Legend**
- +— AMTD Line
 - City Plan Waterway Corridors
 - Flood Inundation Extent
 - Waterway/Waterbody

DATA INFORMATION

The flood maps must be read in conjunction with the flood study report and interpreted by a qualified professional engineer. The flood maps are based on the best data available to Brisbane City Council ("Council") at the time the maps were developed. Council, and the copyright owners listed below, give no warranty in relation to the data (including accuracy, reliability, completeness, currency or suitability) presented in these maps and the user uses and relies upon the data in the maps at its own sole risk and liability. Council is not liable for errors or omissions in the flood maps. To the full extent that it is able to do so in law, the Council disclaims all liability (including without limitation, liability in negligence) for any loss, damage or costs (including indirect and consequential loss and damage), caused by or arising from anyone using or relying on the data contained in the flood maps for any purpose whatsoever.

©Brisbane City Council 2014 (Unless stated below)
 Cadastre © 2006 Department of Natural Resources and Mines 2009 NAVTEQ Street Data © 2008 NAVTEQ;
 2007 Aerial Imagery ©2007 Furgo Spatial Solutions; 2005 Aerial Imagery ©2005 QASCO; 2005 Brisway © 2009
 Melway Publishing; 2005 DigitalGlobe Quickbird Satellite Imagery © 2005 DigitalGlobe; 2002 Contours © 2002 AAMHatch



Prepared : 097142
 Checked : JS
 Revision : 0
 Publication Date : 01 Jul 2014
 Project Number : 140479

**Brighton Creek
 20% AEP Flood Extent Map
 Existing Scenario
 Figure J.17**



For Information Only - Not Council Policy

Brisbane City Council
 City Projects Office
 GPO Box 1434
 Brisbane Qld 4001
 For more information
 visit www.brisbane.qld.gov.au
 or call (07) 3403 8888



Dedicated to a better Brisbane

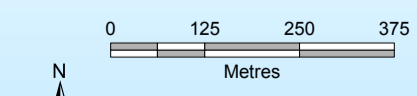
Legend

- +— AMTD Line
- City Plan Waterway Corridors
- Flood Inundation Extent
- Waterway/Waterbody

DATA INFORMATION

The flood maps must be read in conjunction with the flood study report and interpreted by a qualified professional engineer. The flood maps are based on the best data available to Brisbane City Council ("Council") at the time the maps were developed. Council, and the copyright owners listed below, give no warranty in relation to the data (including accuracy, reliability, completeness, currency or suitability) presented in these maps and the user uses and relies upon the data in the maps at its own sole risk and liability. Council is not liable for errors or omissions in the flood maps. To the full extent that it is able to do so in law, the Council disclaims all liability (including without limitation, liability in negligence) for any loss, damage or costs (including indirect and consequential loss and damage), caused by or arising from anyone using or relying on the data contained in the flood maps for any purpose whatsoever.

©Brisbane City Council 2014 (Unless stated below)
 Cadastre © 2006 Department of Natural Resources and Mines 2009 NAVTEQ Street Data © 2008 NAVTEQ;
 2007 Aerial Imagery ©2007 Furgo Spatial Solutions; 2005 Aerial Imagery ©2005 QASCO; 2005 Brisway © 2009
 Melway Publishing; 2005 DigitalGlobe Quickbird Satellite Imagery © 2005 DigitalGlobe; 2002 Contours © 2002 AAMHatch



Prepared : 097142
 Checked : JS
 Revision : 0
 Publication Date : 01 Jul 2014
 Project Number : 140479

**Brighton Creek
 5% AEP Flood Extent Map
 Existing Scenario**

Figure J.18



- Legend**
- +— AMTD Line
 - City Plan Waterway Corridors
 - Flood Inundation Extent
 - Waterway/Waterbody

DATA INFORMATION

The flood maps must be read in conjunction with the flood study report and interpreted by a qualified professional engineer. The flood maps are based on the best data available to Brisbane City Council ("Council") at the time the maps were developed. Council, and the copyright owners listed below, give no warranty in relation to the data (including accuracy, reliability, completeness, currency or suitability) presented in these maps and the user uses and relies upon the data in the maps at its own sole risk and liability. Council is not liable for errors or omissions in the flood maps. To the full extent that it is able to do so in law, the Council disclaims all liability (including without limitation, liability in negligence) for any loss, damage or costs (including indirect and consequential loss and damage), caused by or arising from anyone using or relying on the data contained in the flood maps for any purpose whatsoever.

©Brisbane City Council 2014 (Unless stated below)
 Cadastre © 2006 Department of Natural Resources and Mines 2009 NAVTEQ Street Data © 2008 NAVTEQ;
 2007 Aerial Imagery ©2007 Furgo Spatial Solutions; 2005 Aerial Imagery ©2005 QASCO; 2005 Brisway © 2009
 Melway Publishing; 2005 DigitalGlobe Quickbird Satellite Imagery © 2005 DigitalGlobe; 2002 Contours © 2002 AAMHatch

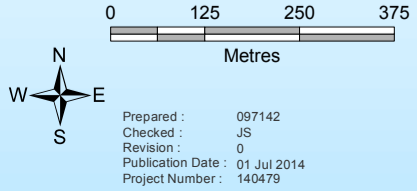
For Information Only - Not Council Policy

Brisbane City Council
 City Projects Office
 GPO Box 1434
 Brisbane Qld 4001
 For more information
 visit www.brisbane.qld.gov.au
 or call (07) 3403 8888



Dedicated to a better Brisbane

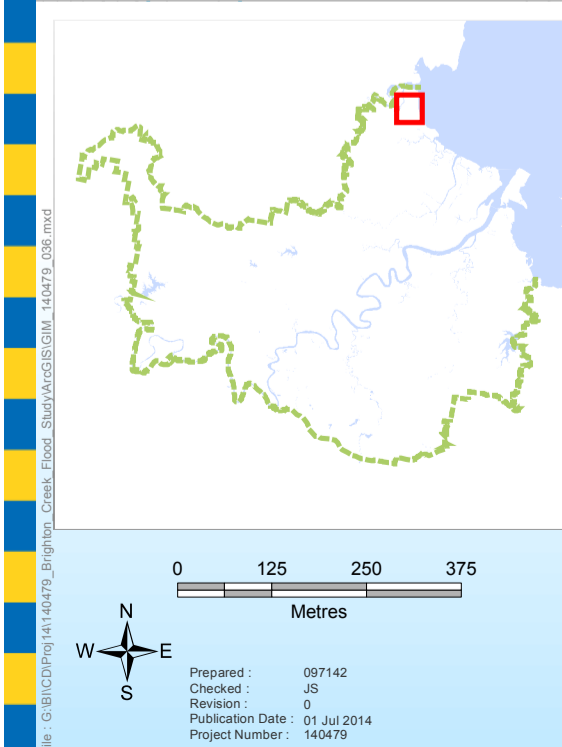
**Brighton Creek
 2% AEP Flood Extent Map
 Existing Scenario
 Figure J.19**



Prepared : 097142
 Checked : JS
 Revision : 0
 Publication Date : 01 Jul 2014
 Project Number : 140479

File: G:\BICD\Proj\14140479_Brighton_Creek_Flood_Study\ArcGIS\GIM_140479_035.mxd

GIM - 140479 - 035



- Legend**
- AMTD Line
 - City Plan Waterway Corridors
 - Flood Inundation Extent
 - Waterway/Waterbody

DATA INFORMATION

The flood maps must be read in conjunction with the flood study report and interpreted by a qualified professional engineer. The flood maps are based on the best data available to Brisbane City Council ("Council") at the time the maps were developed. Council, and the copyright owners listed below, give no warranty in relation to the data (including accuracy, reliability, completeness, currency or suitability) presented in these maps and the user uses and relies upon the data in the maps at its own sole risk and liability. Council is not liable for errors or omissions in the flood maps. To the full extent that it is able to do so in law, the Council disclaims all liability (including without limitation, liability in negligence) for any loss, damage or costs (including indirect and consequential loss and damage), caused by or arising from anyone using or relying on the data contained in the flood maps for any purpose whatsoever.

©Brisbane City Council 2014 (Unless stated below)
 Cadastre © 2006 Department of Natural Resources and Mines 2009 NAVTEQ Street Data © 2008 NAVTEQ;
 2007 Aerial Imagery ©2007 Furgo Spatial Solutions; 2005 Aerial Imagery ©2005 QASCO; 2005 Brisway © 2009
 Melway Publishing; 2005 DigitalGlobe Quickbird Satellite Imagery © 2005 DigitalGlobe; 2002 Contours © 2002 AAMHatch

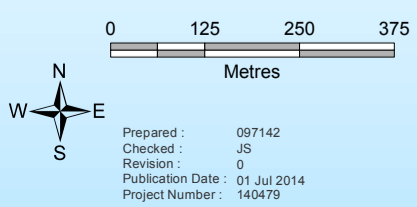
For Information Only - Not Council Policy

Brisbane City Council
 City Projects Office
 GPO Box 1434
 Brisbane Qld 4001
 For more information
 visit www.brisbane.qld.gov.au
 or call (07) 3403 8888



Dedicated to a better Brisbane

**Brighton Creek
 1% AEP Flood Extent Map
 Existing Scenario
 Figure J.20**



Prepared : 097142
 Checked : JS
 Revision : 0
 Publication Date : 01 Jul 2014
 Project Number : 140479

File: G:\BICD\Proj\14140479_Brighton_Creek_Flood_Study\ArcGIS\GIM_140479_036.mxd

GIM - 140479 - 036



- Legend**
- +— AMTD Line
 - City Plan Waterway Corridors
 - Flood Inundation Extent
 - Waterway/Waterbody

DATA INFORMATION

The flood maps must be read in conjunction with the flood study report and interpreted by a qualified professional engineer. The flood maps are based on the best data available to Brisbane City Council ("Council") at the time the maps were developed. Council, and the copyright owners listed below, give no warranty in relation to the data (including accuracy, reliability, completeness, currency or suitability) presented in these maps and the user uses and relies upon the data in the maps at its own sole risk and liability. Council is not liable for errors or omissions in the flood maps. To the full extent that it is able to do so in law, the Council disclaims all liability (including without limitation, liability in negligence) for any loss, damage or costs (including indirect and consequential loss and damage), caused by or arising from anyone using or relying on the data contained in the flood maps for any purpose whatsoever.

©Brisbane City Council 2014 (Unless stated below)
 Cadastre © 2006 Department of Natural Resources and Mines 2009 NAVTEQ Street Data © 2008 NAVTEQ;
 2007 Aerial Imagery ©2007 Furgo Spatial Solutions; 2005 Aerial Imagery ©2005 QASCO; 2005 Brisway © 2009
 Melway Publishing; 2005 DigitalGlobe Quickbird Satellite Imagery © 2005 DigitalGlobe; 2002 Contours © 2002 AAMHatch

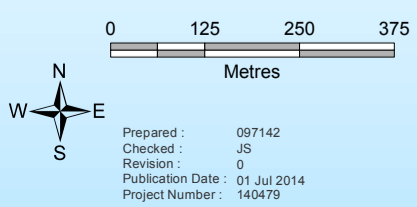
For Information Only - Not Council Policy

Brisbane City Council
 City Projects Office
 GPO Box 1434
 Brisbane Qld 4001
 For more information
 visit www.brisbane.qld.gov.au
 or call (07) 3403 8888



Dedicated to a better Brisbane

**Brighton Creek
 0.5% AEP Flood Extent Map
 Existing Scenario
 Figure J.21**



Prepared : 097142
 Checked : JS
 Revision : 0
 Publication Date : 01 Jul 2014
 Project Number : 140479

File: G:\BICD\Proj\14140479_Brighton_Creek_Flood_Study\ArcGIS\GIM_140479_037.mxd

GIM - 140479 - 037



For Information Only - Not Council Policy

Brisbane City Council
 City Projects Office
 GPO Box 1434
 Brisbane Qld 4001
 For more information
 visit www.brisbane.qld.gov.au
 or call (07) 3403 8888



Dedicated to a better Brisbane

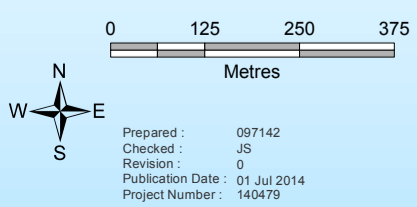
**Brighton Creek
 0.2% AEP Flood Extent Map
 Existing Scenario
 Figure J.22**

- Legend**
- +— AMTD Line
 - City Plan Waterway Corridors
 - Flood Inundation Extent
 - Waterway/Waterbody

DATA INFORMATION

The flood maps must be read in conjunction with the flood study report and interpreted by a qualified professional engineer. The flood maps are based on the best data available to Brisbane City Council ("Council") at the time the maps were developed. Council, and the copyright owners listed below, give no warranty in relation to the data (including accuracy, reliability, completeness, currency or suitability) presented in these maps and the user uses and relies upon the data in the maps at its own sole risk and liability. Council is not liable for errors or omissions in the flood maps. To the full extent that it is able to do so in law, the Council disclaims all liability (including without limitation, liability in negligence) for any loss, damage or costs (including indirect and consequential loss and damage), caused by or arising from anyone using or relying on the data contained in the flood maps for any purpose whatsoever.

©Brisbane City Council 2014 (Unless stated below)
 Cadastre © 2006 Department of Natural Resources and Mines 2009 NAVTEQ Street Data © 2008 NAVTEQ;
 2007 Aerial Imagery ©2007 Furgo Spatial Solutions; 2005 Aerial Imagery ©2005 QASCO; 2005 Brisway © 2009
 Melway Publishing; 2005 DigitalGlobe Quickbird Satellite Imagery © 2005 DigitalGlobe; 2002 Contours © 2002 AAMHatch



Prepared : 097142
 Checked : JS
 Revision : 0
 Publication Date : 01 Jul 2014
 Project Number : 140479

File: G:\BICD\Proj\14140479_Brighton_Creek_Flood_Study\ArcGIS\GIM_140479_038.mxd

GIM - 140479 - 038



- Legend**
- +— AMTD Line
 - City Plan Waterway Corridors
 - Flood Inundation Extent
 - Waterway/Waterbody

DATA INFORMATION

The flood maps must be read in conjunction with the flood study report and interpreted by a qualified professional engineer. The flood maps are based on the best data available to Brisbane City Council ("Council") at the time the maps were developed. Council, and the copyright owners listed below, give no warranty in relation to the data (including accuracy, reliability, completeness, currency or suitability) presented in these maps and the user uses and relies upon the data in the maps at its own sole risk and liability. Council is not liable for errors or omissions in the flood maps. To the full extent that it is able to do so in law, the Council disclaims all liability (including without limitation, liability in negligence) for any loss, damage or costs (including indirect and consequential loss and damage), caused by or arising from anyone using or relying on the data contained in the flood maps for any purpose whatsoever.

©Brisbane City Council 2014 (Unless stated below)
 Cadastre © 2006 Department of Natural Resources and Mines 2009 NAVTEQ Street Data © 2008 NAVTEQ;
 2007 Aerial Imagery ©2007 Furgo Spatial Solutions; 2005 Aerial Imagery ©2005 QASCO; 2005 Brisway © 2009
 Melway Publishing; 2005 DigitalGlobe Quickbird Satellite Imagery © 2005 DigitalGlobe; 2002 Contours © 2002 AAMHatch

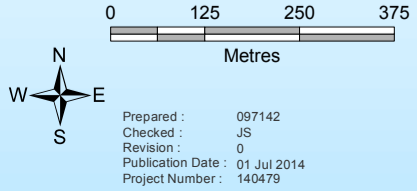
For Information Only - Not Council Policy

Brisbane City Council
 City Projects Office
 GPO Box 1434
 Brisbane Qld 4001
 For more information
 visit www.brisbane.qld.gov.au
 or call (07) 3403 8888



Dedicated to a better Brisbane

**Brighton Creek
 0.05% AEP Flood Extent Map
 Existing Scenario
 Figure J.23**



Prepared : 097142
 Checked : JS
 Revision : 0
 Publication Date : 01 Jul 2014
 Project Number : 140479

File: G:\BICD\Proj\14140479_Brighton_Creek_Flood_Study\ArcGIS\GIM_140479_039.mxd

GIM - 140479 - 039